

Webinar

Emerging Stronger after COVID-19:

Science, Technology, and Innovation for Sustainable Development

Panelist

Pai-Po Lee

Deputy Secretary General, International Cooperation and
Development Fund (TaiwanICDF)



Webinar hosted by



International Cooperation and
Development Fund

Center for Sustainable Development
EARTH INSTITUTE | COLUMBIA UNIVERSITY

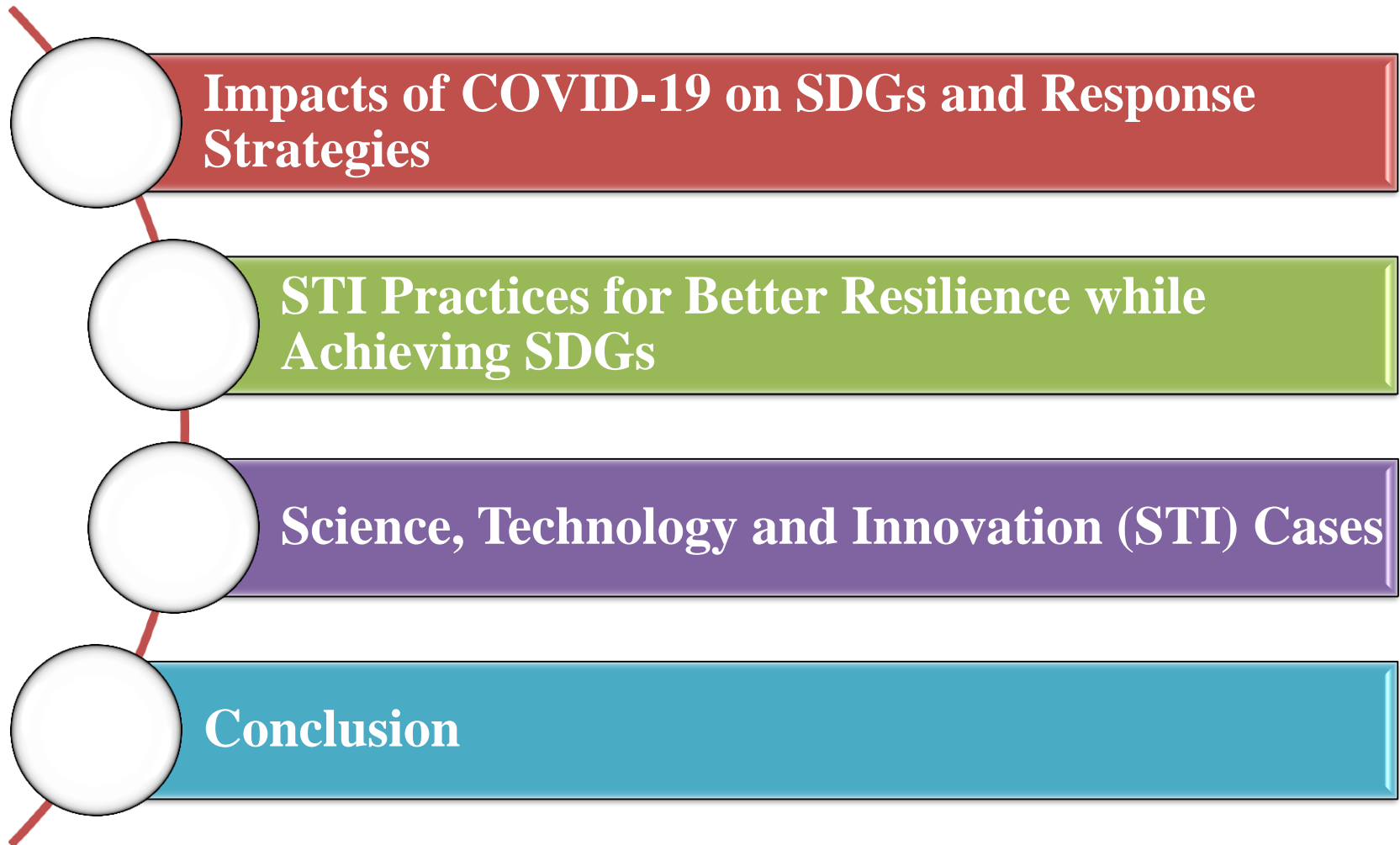




Post-Pandemic Resilience through STI: Practices in Education, Health, and Food Systems

**Deputy Secretary General
TaiwanICDF
Dr. Pai-Po Lee
July 16, 2020**

Outline



Impacts of COVID-19 on SDGs and Response Strategies

SUSTAINABLE DEVELOPMENT GOALS



COVID-19 Impacts

- Setbacks in SDGs with cross-sector issues & disproportional impacts on vulnerable people

Advantages of the Taiwan Model

- Comprehensive and connected eco-system
- Smart technology
- Public-Private-People Partnership (PPPP)
- International cooperation



The TaiwanICDF's Strategies to 2030

- Food security & rural development
- Health
- Learning & capacity building
- Governance
- Climate change & sustainable environment
- Economy development & global partnership



STI Practices for Better Resilience while Achieving SDGs



Digital Environment and Capacity

Application of ICT for
Educational
Development Project



Digitalized Information and Data

Health Information
Management Efficiency
Enhancement Project in
Paraguay



Diversified Application

- COVID-19 Cases Monitoring System
- Surubi Fingerling Breeding and Cultivation Project



Science

Technology

Innovation

The Application of Information and Communication Technology for Educational Development

2 Primary Schools
4 Secondary Schools

- Building Smart Classroom Environments
- Inspiring Teacher Engagement
- Enhancing Digital Capacity
- Establishing Online Educational Platforms



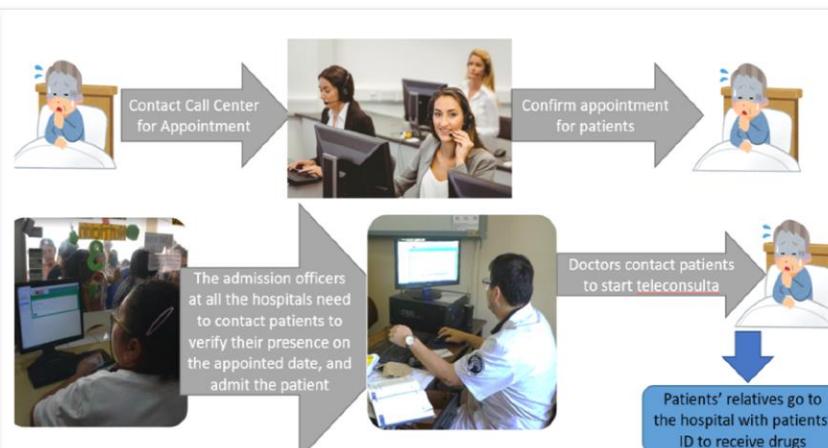
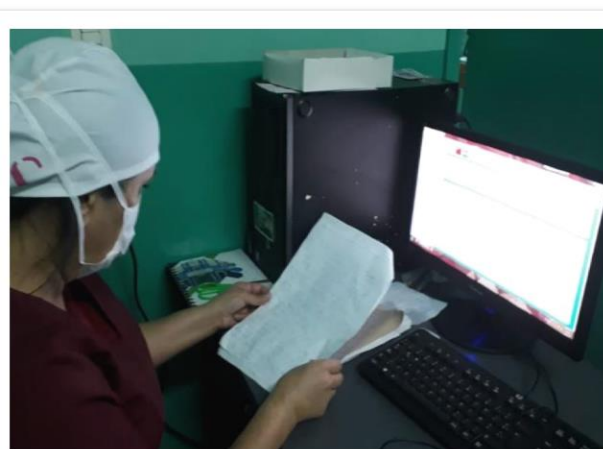
STI Practices for Digitalized Information & Data



Health Information Management Efficiency Enhancement Project in Paraguay



- Introduced Health Information System (HIS)
- Digitalized health and medical records
- Linked hospital information to National Health System
- Developed case tracking function
- Developed tele-consultation function in HIS for social distancing



STI Practices for Diversified Application

Map of Disease – a Taiwanese volunteer is utilizing GIS skills to help monitor diseases, such as Dengue Fever and Coronavirus, in St. Vincent & the Grenadines



**Geographic
Information
System**

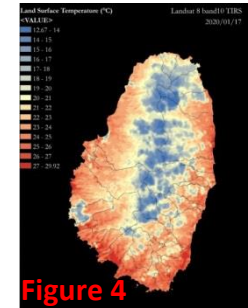
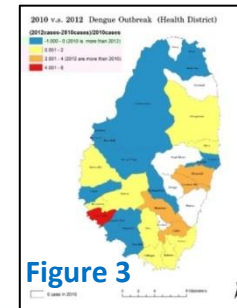
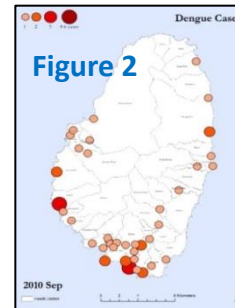
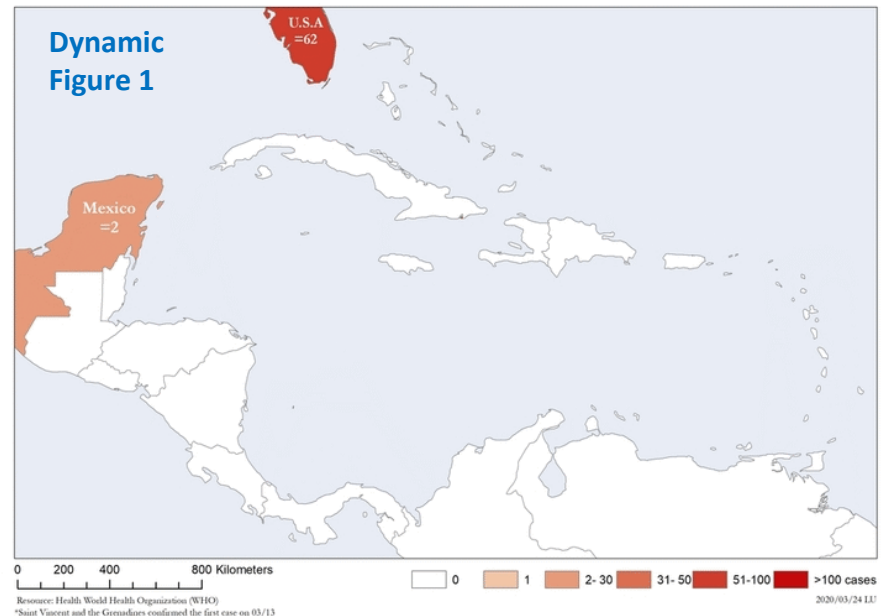
Help aggregate and integrate data into one database

Change the way GIS data is collected and processed

Enhance data visualization for analyses and planning

Provide capacity building in GIS knowledge and modelling

3/01 Coronavirus Confirmed Cases

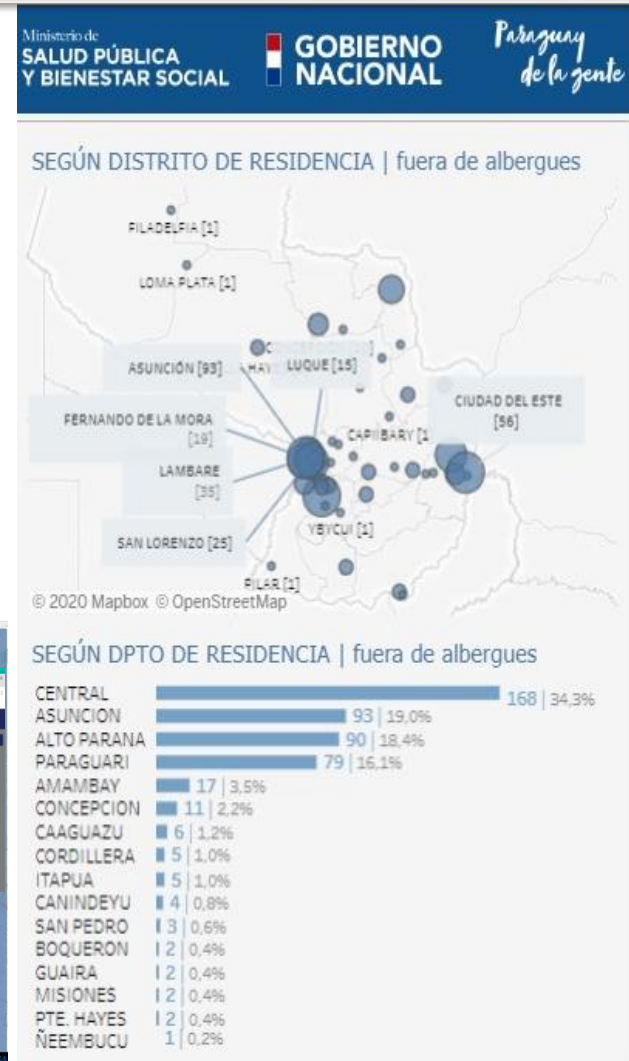
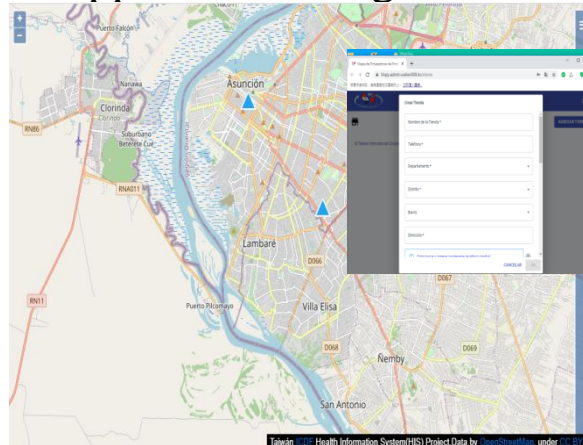


STI Practices for Diversified Application



Surubi Fingerling Breeding and Cultivation Project

- Application platform
 - Building connections between aquaculture producers and consumers during lockdown
 - Providing direct links and bridging the distance between producers and consumers
 - Sustaining sales activities and avoiding unnecessary contact to prevent the spread of COVID-19
 - Covering other livelihood supplies including dairy, honey, fruits, and vegetables in the near future



Innovative Global Partnerships Catalyzed by the Pandemic

Financing Tools for Economic Reactivation Post COVID-19



Providing catalytic capital to the **Women's Livelihood Bond(WLB) Series** to support underserved women and girls in South and Southeast Asia in transforming to sustainable and COVID-resilient livelihoods.



Paris Declaration on Aid Effectiveness

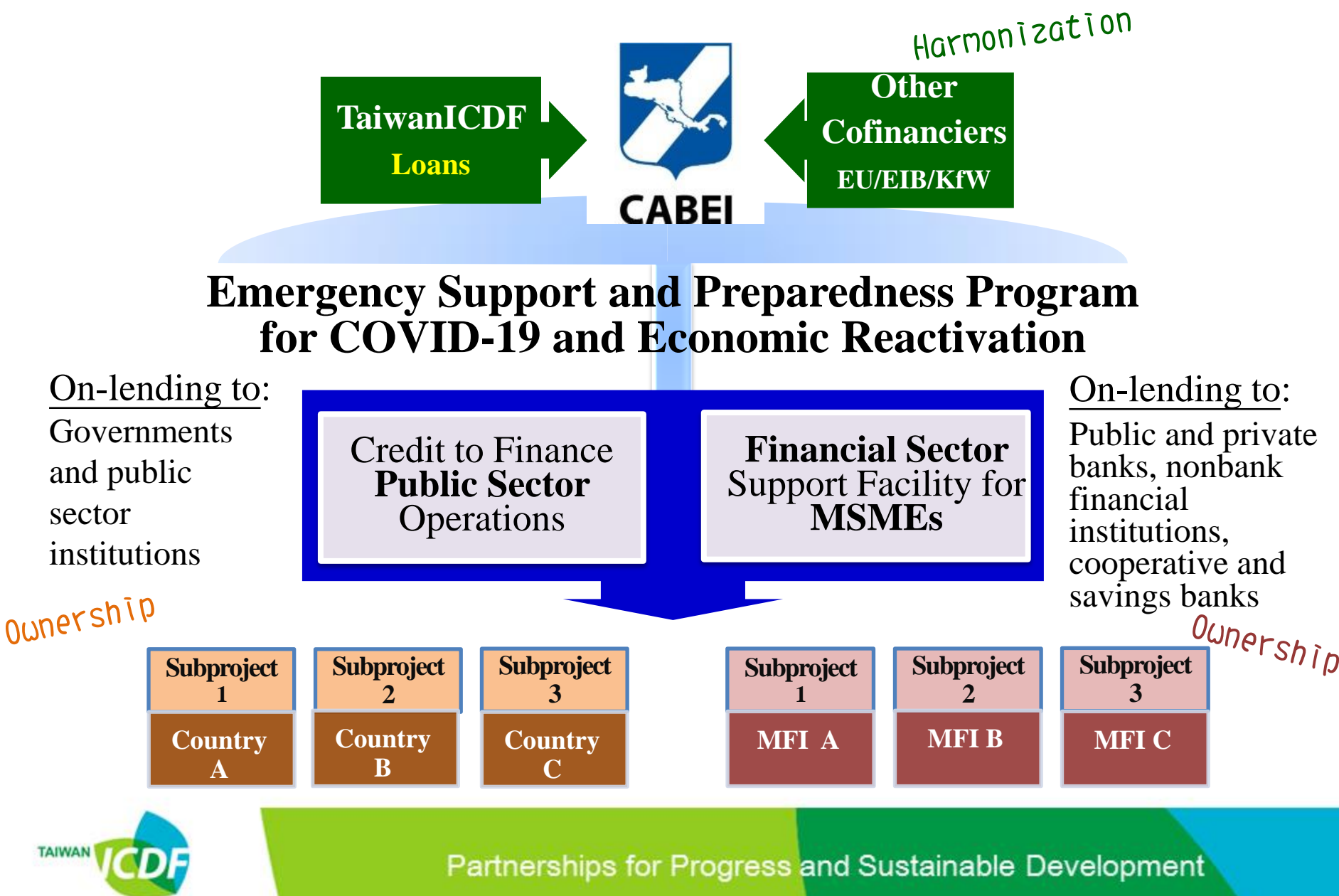
- Harmonization
- Ownership

Benefit corporation
**fundación
paraguaya**
Executing agency



Focus on the role of **social impact** in financing sustainable development.

Innovative Global Partnerships Catalyzed by the Pandemic



Conclusion

Comprehensive

- Assisting partners in building digital platform and capacity, making use of data, and applying STI in the post COVID-19 era
- Designing cross-sector solutions to enhance total resilience

Proactive

- Supporting financial institutions and MSMEs overcome the COVID-19 pandemic
- Creating new SDGs tools with STI development
- Innovating new applications of STI for achieving SDGs by 2030

Partnership

- Expanding scope of cooperation and sharing best practices with international allies and partners
- Strengthening Public-Private-People Partnership (PPPP)
- Cooperating with bilateral and multilateral development partners



Thank you!

**A Better
World,
A Brighter
Future**